

HPC workshop online

- session 1: connect to the [HPC@DCCN](#) from home -



<http://hpc.dccn.nl>

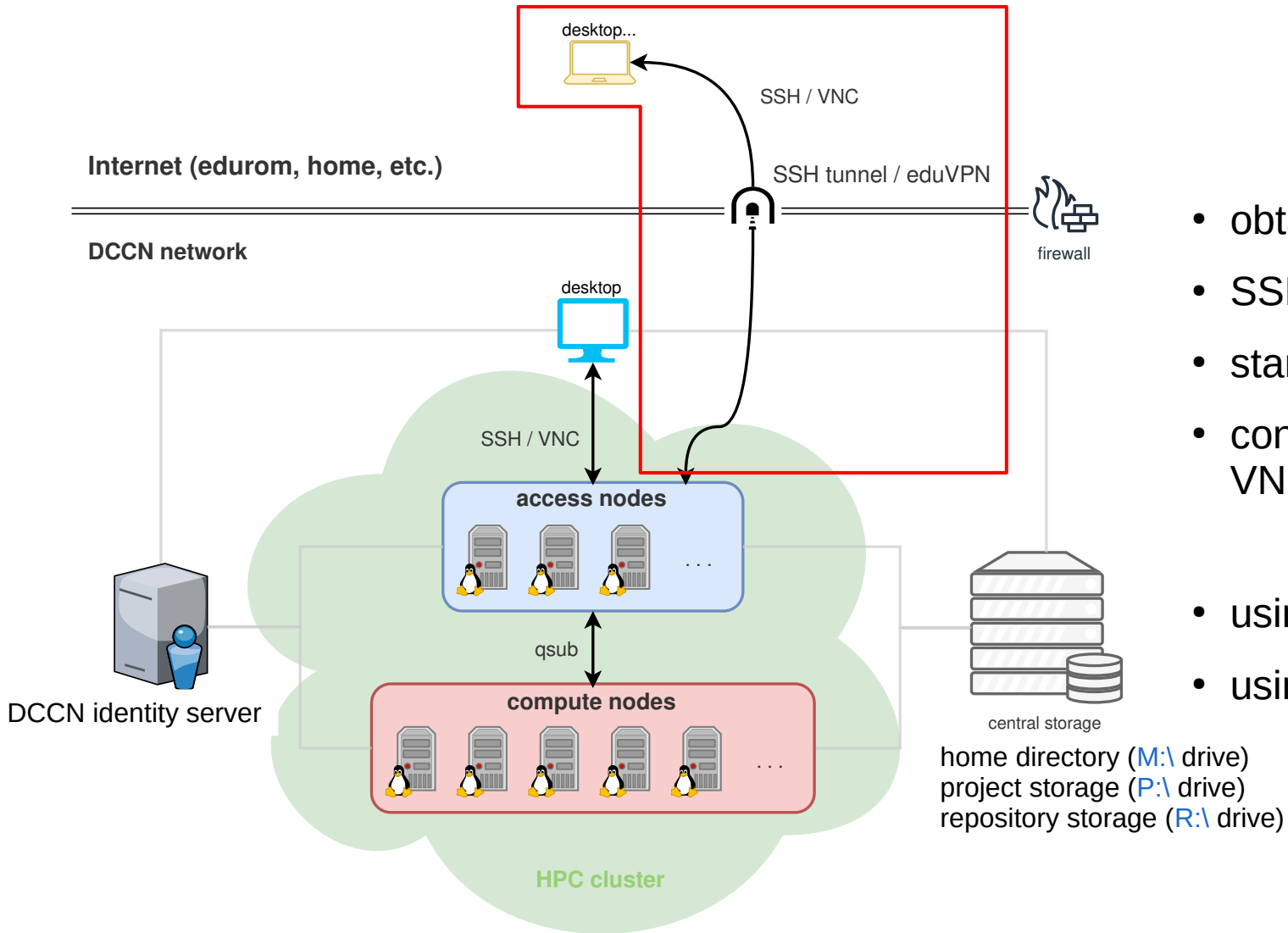


helpdesk@fcdonders.ru.nl



[DCCN#HPC users](#)

- small presentation + demo
 - Windows: Mariam Zabihi
 - Mac: Saige Rutherford
 - Linux: Hong Lee
- Q&A
 - post your questions in the Zoom chat



- obtain a DCCN account
- SSH to an access node
- start a VNC server
- connect VNC client to the VNC server
- using eduVPN
- using SSH tunnel

obtain a DCCN account

- DCCN/CNS users receive it after the check-in at the TG.
- For DCC, there is a separate process to follow.

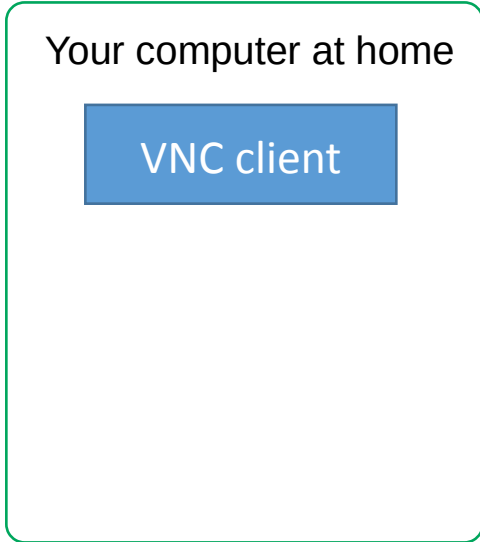
eduVPN

- "virtually" connect your computer at home to the DCCN network
- only for users with RU u/e-numbers
- request "**EduVPN Trigon Access**" via <https://account.ru.nl>
- install eduVPN client and connect

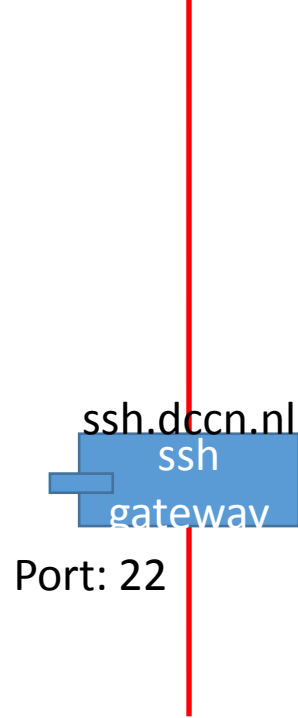
SSH tunnel

- a.k.a. SSH local port forwarding
- "represent" a remote server as a local server running on your computer at home
 - server: protocol, **hostname (or IP address), network port**
 - VNC server, remote desktop server, jupyter notebook server, etc.
- connect client to the local server and data is forwarded through the tunnel to the remote server
 - client: software that talks to the server with the same protocol

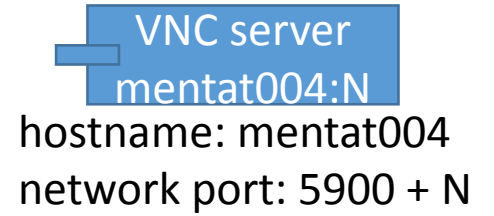
External network



firewall



DCCN network



External network

Your computer at home

VNC client

Virtual VNC
server

hostname: localhost
network port: 5901

firewall

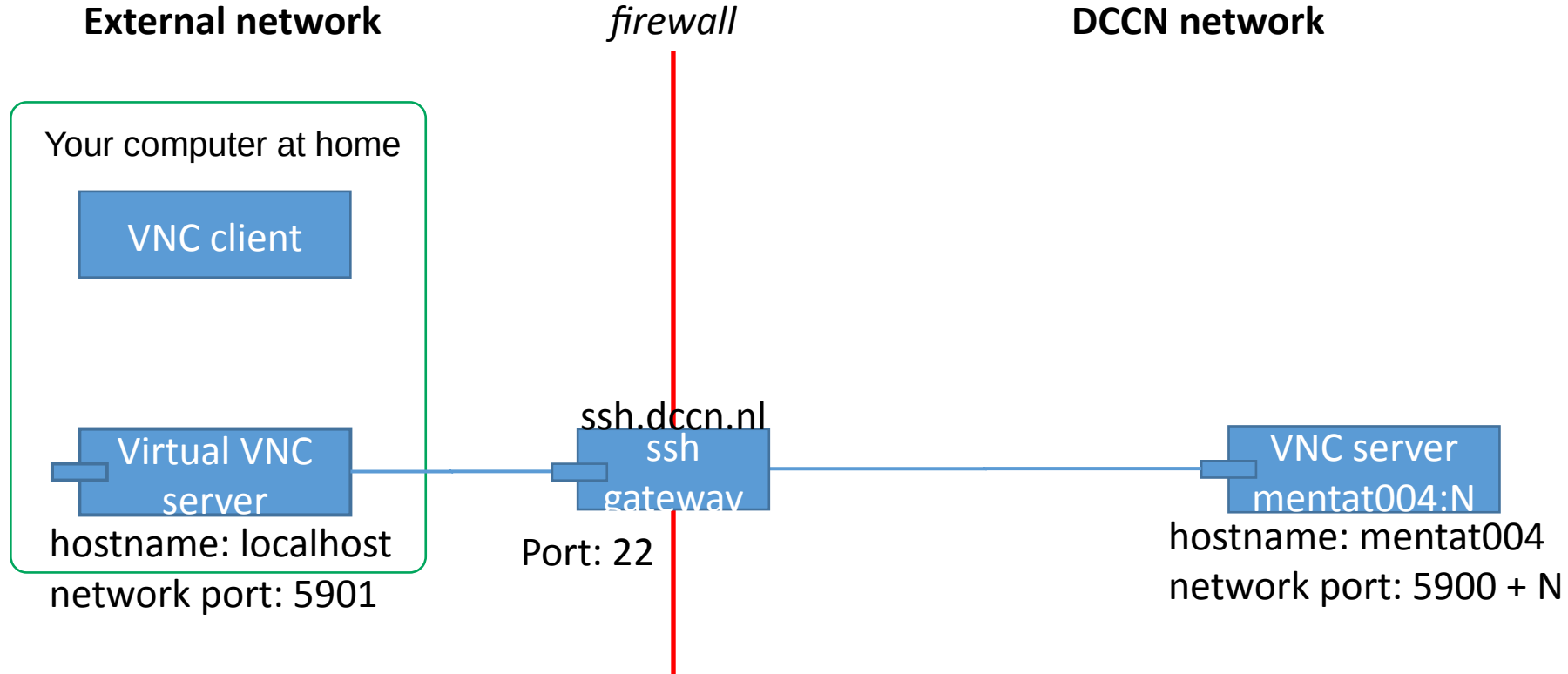
ssh.dccn.nl
ssh
gateway

Port: 22

DCCN network

VNC server
mentat004:N

hostname: mentat004
network port: 5900 + N



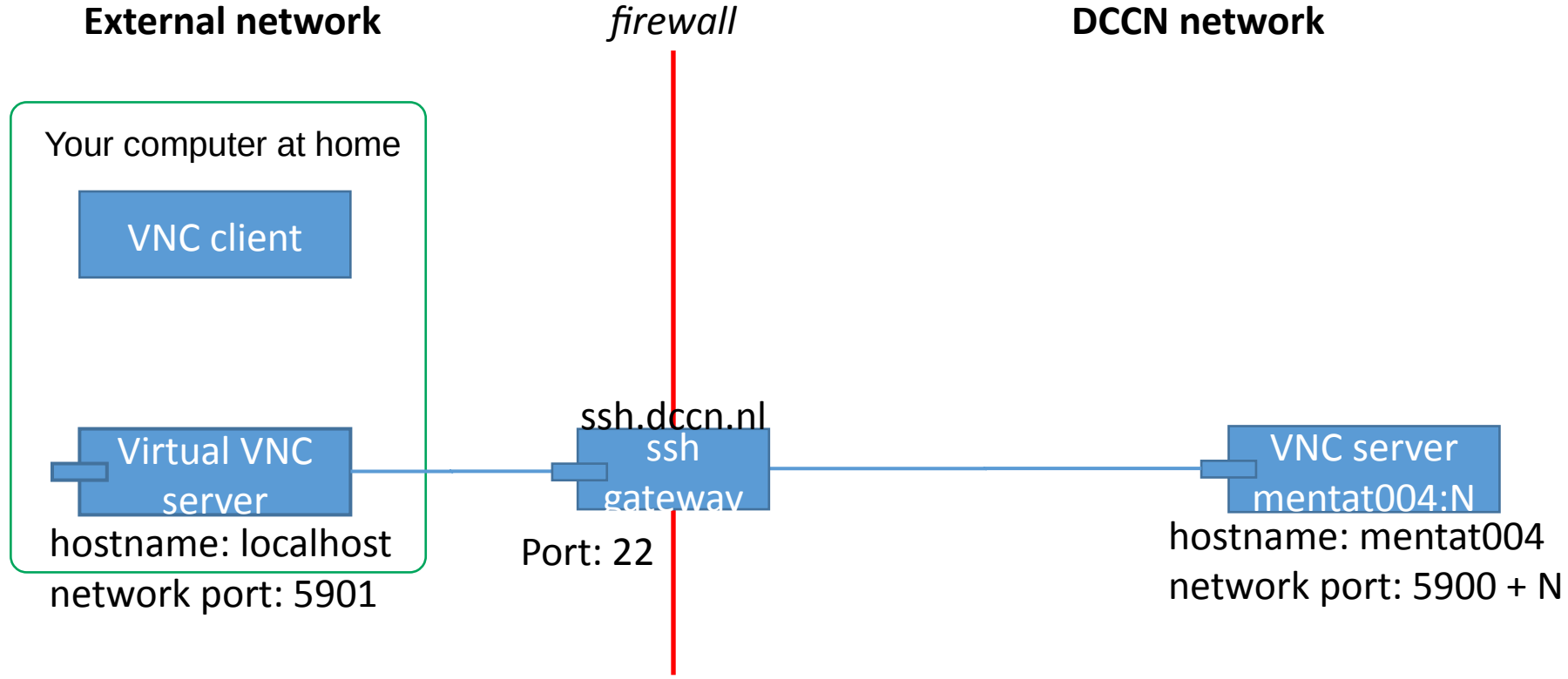
N=10

```
ssh -L 5901:mentat004:5910 ssh.dccn.nl
```

Mac/Linux (terminal)

SSH Tunnels > Source, Destination, Local

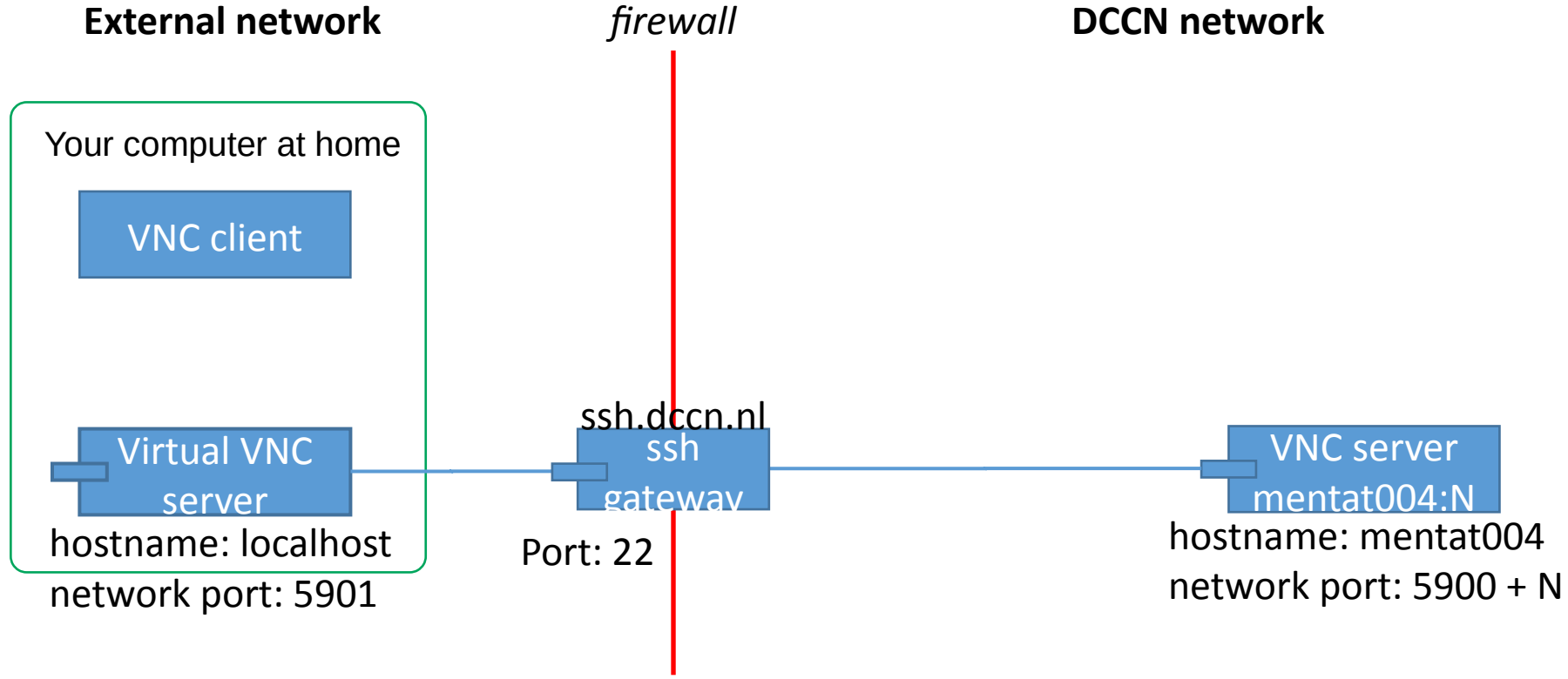
Windows (putty)



N=10

```
ssh -L 5901:mentat004:5910 ssh.dccn.nl Mac/Linux (terminal)
```

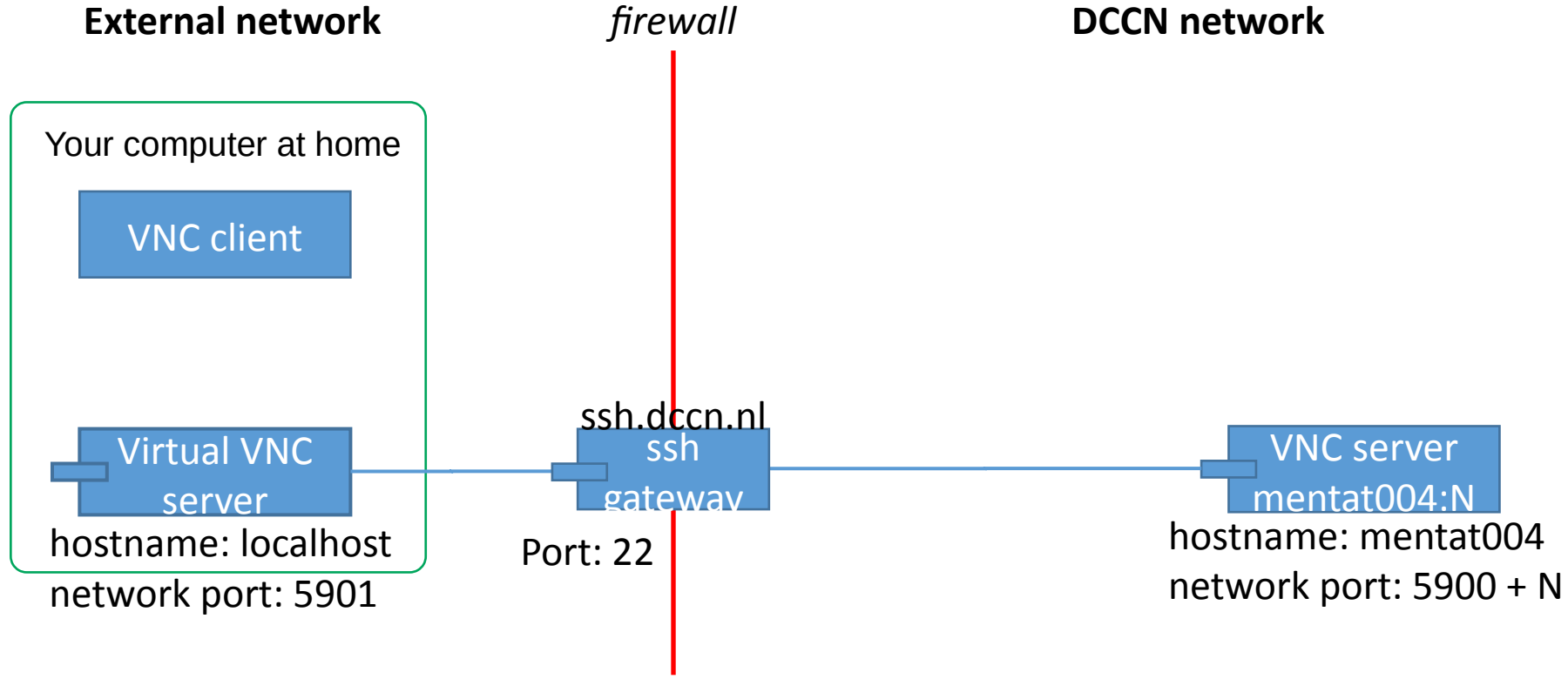
```
SSH Tunnels > Source, Destination, Local Windows (putty)
```



N=10

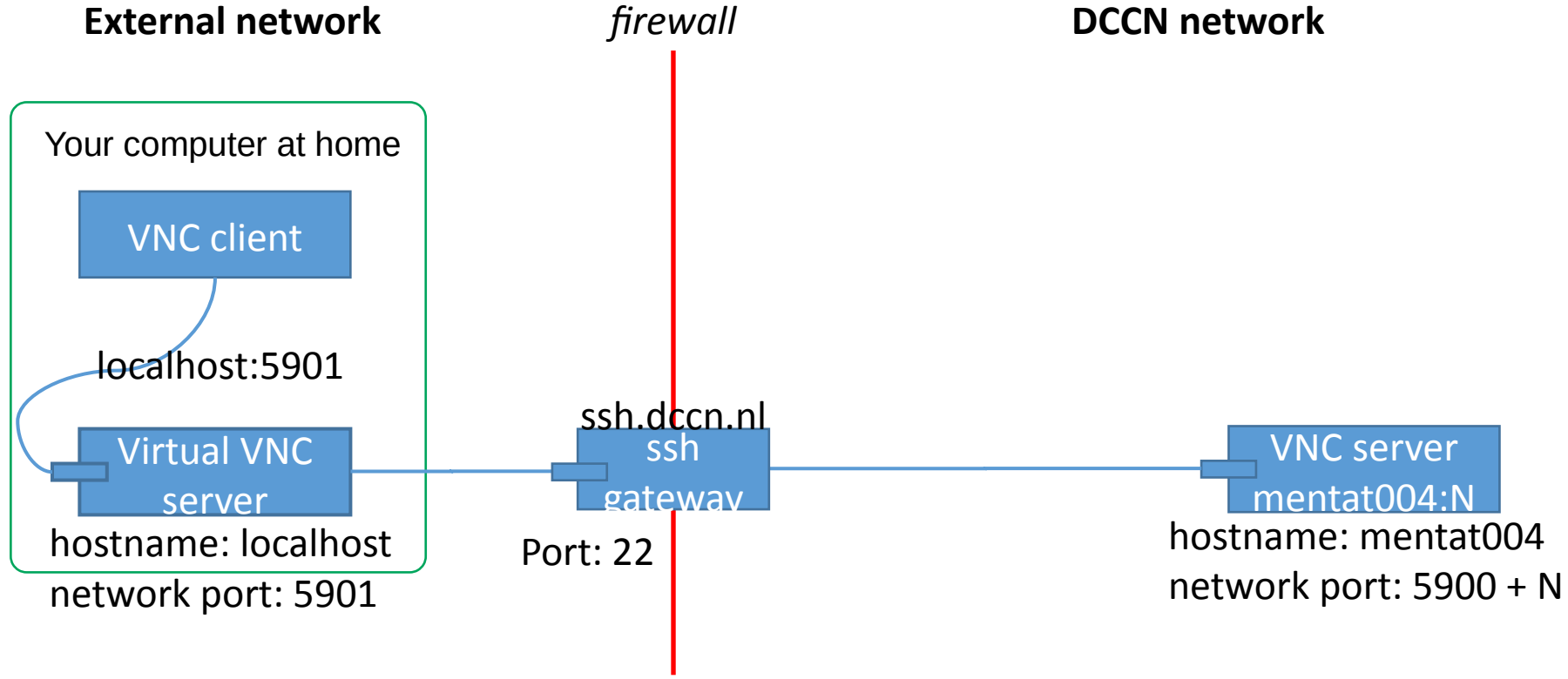
```
ssh -L 5901:mentat004:5910 ssh.dccn.nl Mac/Linux (terminal)
```

```
SSH Tunnels > Source, Destination, Local Windows (putty)
```



```
ssh -L 5901:mentat004:5910 ssh.dccn.nl Mac/Linux (terminal)
```

```
SSH Tunnels > Source, Destination, Local Windows (putty)
```



N=10

```
ssh -L 5901:mentat004:5910 ssh.dccn.nl Mac/Linux (terminal)
```

```
SSH Tunnels > Source, Destination, Local Windows (putty)
```